



Planning Your Post-16 Journey

A guide for young people in Sheffield



Lifelong
Learning
& Skills



Contents

- 3** [Welcome!](#)
- 4** [How to Use This Guide](#)
- 6** [Who Can Help You](#)
- 9** [What's Important to Young People in Sheffield?](#)
- 10** [Different Pathways After Year 11](#)
- 12** [Maths and English: What You Need to Know](#)
- 13** [Thinking About Your Future](#)
- 15** [Understanding Your Strengths](#)
- 17** [Coping With Change](#)
- 20** [Jobs in Sheffield](#)
- 22** [Top Tips for Choosing Your Next Step](#)
- 24** [What's on Offer in Sheffield](#)
- 26** [Provider Websites](#)
- 28** [Subject Areas and Courses](#)
- 85** [Other Useful Services](#)
- 87** [Your Thoughts Matter](#)

Welcome!

Choosing what to do after Year 11 is an important step. It can feel positive, and it can also feel uncertain. **You do not have to work it out on your own.** There is help available, and there are different ways to move forward.

Sheffield City Council has created this guide to support young people to choose their next step after Year 11. It is for students working from **Pre-Entry Level up to Level 2** who are moving into post-16 learning. You may find it helpful to use this guide on your own or **with a parent, carer, teacher, careers adviser, or support worker.**

This guide shows the post-16 courses available in Sheffield at local schools, colleges, and training providers. If you are in Year 11 now, it can help you think about what comes next. The guide is organised by **subject and career area** so you can explore options based on what you are interested in and what suits you.

Everyone has different strengths and learns in different ways. Some people like practical learning, some prefer clear routines, and some need more time or support to build

confidence. All of these are normal. Looking at your options can help you understand what works for you and make your next step feel more manageable.

In England, **you must stay in education or training until you are 18.** This could be at college, in training, or in work with training. **If you have an Education, Health and Care Plan (EHCP),** you may be able to stay in education or training until you are **25** if this supports your preparation for adult life.

This guide is designed to be used on a computer or device, as it includes links you can click for more information. The details were correct at the time of writing, but things can change, so it is always a good idea to **check directly with schools and colleges.**

How to Use This Guide

This guide helps you look at post-16 options in Sheffield. It shows:

- different subjects and career areas
- courses you can study
- where you can study them
- what you can do next after a course



Who the Guide Is For

This guide is for young people who:

- are in Year 11 or have just left school
- are working from Pre-Entry Level to Level 2
- may have SEND
- may have an Education, Health and Care Plan (EHCP)

How the Guide Is Set Out

The guide is organised by **subject and career area**.

Each section includes:

- a short explanation of the career area
- the courses available in Sheffield
- entry requirements
- what the course could lead to next

Links to college and training provider websites are included later in the guide.

How to Read the Guide

You do not need to read this guide in order.

You can:

- start with subjects you like
- skip sections that are not for you
- read a little at a time
- come back to it later

You can use this guide on your own or with someone who supports you.

What to Do Next

After using this guide, you may want to:

- talk to someone about your ideas
- visit a college website
- ask questions about a course
- get help with applications

The next pages of this guide will show you **who can help**.



Who Can Help You

You do not have to plan your next step on your own. There are people at school and in Sheffield whose job is to help you. This table shows who they are and how they can help.

Who	What They Help With	Who It Is For	How to Contact
People at your school	Help you think about courses, next steps, and support. This can include teachers, tutors, SENCOs, learning support staff, or a careers adviser.	Young people still at school	Ask a teacher or adult you trust at school
Community Youth Services – Careers (IAG)	Careers advice, choosing courses, help with applications, planning next steps, and support if you are not in education, training or work. They also support young people with an EHCP.	Young people aged 13–25 in Sheffield	Phone: 0114 273 4462 Email: youth.services@sheffield.gov.uk Website: sheffield.gov.uk (search “Community Youth Services careers”)



Who	What They Help With	Who It Is For	How to Contact
Sheffield SEND Information, Advice and Support Service (SENDIAS)	Free and private advice about SEND, EHCPs, education options, and your rights. Help talking to schools and colleges.	Young people with SEND (up to 25) and parents/ carers	Phone: 0114 273 6009 Email: ssendias@sheffield.gov.uk Website: sheffieldsendias.org.uk

Who	What They Help With	Who It Is For	How to Contact
Sheffield Local Offer	Information about SEND services in Sheffield, including education, preparation for adulthood, travel support, health, and activities.	Young people with SEND (0–25) and parents/ carers	Website: sheffielddirectory.org.uk/localoffer
Colleges and training providers	Explain their courses, tell you what support they offer, help with applications, and answer questions about routines and timetables.	Young people thinking about college or training	Website links are included later in this guide

If You Are Not Sure Who to Contact

If you feel unsure, a good place to start is:

- someone at your school
- Community Youth Services (IAG)
- SENDIAS

They can help you work out what to do next.

What's Important to Young People in Sheffield?

When we talk to young people in Sheffield about the future, we hear many different ideas. Even so, lots of young people say they want similar things.

Many young people want:

- to have a job
- to make and keep friends
- to keep learning new things
- to be more independent

Young people also talk about the **types of work** they are interested in. These interests are wide and varied, and they can change over time.

Some common areas of interest include:

- working with computers and technology
- games, media, and creative work
- speaking, performing, or using their voice
- writing and sharing information
- online content and social media
- working in shops and customer service
- caring and health roles
- public services and helping the community

You do not need to decide what you want to do right now.

This guide will help you explore these interests and see which courses and pathways in Sheffield might suit you.

Different Pathways After Year 11

After Year 11, there is more than one way to move forward.

Different pathways suit different people. All of these are real options.

Pathway	What This Pathway Is About	Who it Can Suit	What It Can Lead to
Life Skills and Independence	Learning everyday skills for adult life, such as cooking, travel, routines, and working with others.	Young people who want to build confidence, independence, and routine with extra support.	Further courses, supported activities, volunteering, or work with support.
Foundation and Work Preparation	Building basic skills like English and maths and trying different types of work in a supported setting.	Young people who want to explore work ideas and get ready for jobs or further study.	Vocational courses, training, supported work, or entry-level jobs.

Pathway	What This Pathway Is About	Who it Can Suit	What It Can Lead to
Vocational Courses for Job Skills	Learning practical skills for a specific job area, such as catering, construction, caring, or digital work.	Young people who are ready to focus on a job area and learn by doing.	Entry-level jobs, apprenticeships, or further training.

A Helpful Reminder

You do not need to choose the “right” pathway straight away. Many young people move between pathways as they learn more about what suits them.

The next section explains **levels**, so you can see where you might start.

What Comes Next

The next section explains **Maths and English**, and why they are important for many courses and jobs.

Maths and English: What You Need to Know

**Maths and English are important for many courses and jobs.
Most young people keep working on these skills after Year 11.**

Subject	Why It Matters	What Usually Happens
English	Helps with reading, writing, speaking, and understanding information.	You may continue to study English if you do not yet have a GCSE grade 4 or Functional Skills Level 2.
Maths	Helps with money, time, measuring, and problem-solving.	You may continue to study maths if you do not yet have a GCSE grade 4 or Functional Skills Level 2.

A Helpful Reminder

If English or maths feels hard, you are not alone.

Many colleges offer extra support and different ways to learn.

You can work on these skills at your own pace.

Thinking About Your Future

Thinking about the future does not mean you have to decide everything.

It just means noticing what matters to you and what feels possible right now.



A Few Simple Things to Think About

You might find it helpful to think about:

- what you enjoy doing
- what you are good at
- what feels hard for you
- what helps you feel calm and focused

There are no right or wrong answers.

Start Small

You do not need a full plan.

You can start with one small idea, such as:

- a subject you like
- a type of activity you enjoy
- a place you would feel comfortable learning

Small steps are enough.



Talk It Through

You do not have to think about this on your own.

Talking to someone you trust can help, such as:

- a parent or carer
- a teacher or support worker
- a careers adviser

They can help you turn ideas into next steps.

A Helpful Reminder

It is okay if your ideas change.

Many people try more than one thing before they find what suits them.

The next section will help you think about your strengths and what you are good at.

Understanding Your Strengths

Everyone has strengths.

Strengths are the things you do well, or the things that come more easily to you.



What Strengths Can Be Like

Your strengths might be:

- practical skills, like cooking or fixing things
- thinking skills, like noticing details or solving problems
- people skills, like listening or helping others
- personal skills, like being reliable or sticking with tasks

All types of strengths matter.

Noticing Your Strengths

You might start to notice your strengths by:

- thinking about things you enjoy
- noticing what you feel proud of
- listening to what others say you are good at

You do not have to be good at everything.



Using Your Strengths

Knowing your strengths can help you:

- choose subjects or courses
- find learning that suits you
- feel more confident about your next step

Courses and pathways are there to match different strengths.

A Helpful Reminder

You are still learning about yourself.

Your strengths can grow and change over time.

The next section looks at coping with change and looking after yourself as you move forward.

Coping With Change

Change can feel hard.

This can include leaving school, starting something new, or meeting new people.

Feeling worried or unsure during change is normal.

There are simple things that can help, and there is support if you need it.

Simple Things That Can Help

You might find it helpful to:

- keep a daily routine
- do things you enjoy
- take breaks when you feel overwhelmed
- talk to someone you trust
- take slow, deep breaths to help you feel calm

You do not have to do all of these. Even one small thing can help.

Talking to Someone

Talking can make change feel easier.

You could talk to:

- a parent or carer
- a teacher or support worker
- a careers adviser
- a friend

If you need extra support, the services below can help.

Support Services in Sheffield

Service	What They Help With	Who It is For	How to Contact
Kooth	Online mental health support. You can message a counsellor or use self-help tools.	Young people aged 11–25	Website: kooth.com
Door 43	Support with mental health, wellbeing, and other worries.	Young people aged 13–25 in Sheffield	Website: sheffieldmentalhealth.co.uk/services/door-43
Golddigger Trust	Confidence building, mentoring, and workshops.	Young people in Sheffield	Website: golddiggertrust.co.uk
CAMHS	Mental health support for under 18s.	Children and young people under 18	Ask your GP or school about a referral

Service	What They Help With	Who It is For	How to Contact
Sheffield Mental Health Guide	Information about local mental health services and support.	Anyone in Sheffield	Website: sheffieldmentalhealth.co.uk



A Helpful Reminder

Asking for help is a good step.

You are not expected to cope on your own.

The next section looks at jobs in Sheffield and the types of work available.

Jobs in Sheffield

Sheffield is a large city with many different types of jobs. There are jobs for people with different skills, interests, and levels of experience.

Some jobs are practical. Some involve helping people. Some use computers or creative skills.



Common Types of Jobs in Sheffield

Health and care

Many people in Sheffield work in hospitals, care homes, clinics, and support services. These jobs include caring for others, helping people stay well, and supporting daily needs.

Education and childcare

There are jobs in schools, colleges, nurseries, and training centres. These roles support learning and help children and young people develop.

Retail and customer service

Sheffield has many shops, supermarkets, cafés, and shopping centres. Jobs often involve helping customers, stocking shelves, or working at tills.

Hospitality and catering

There are jobs in cafés, restaurants, hotels, and food services. These jobs can include cooking, serving food, cleaning, and welcoming customers.

Construction and trades

Some jobs involve building, fixing, or making things. These roles often use hands-on skills and may be indoors or outdoors.

Manufacturing and engineering

Sheffield has a strong history of making things. Some jobs involve machines, tools, or producing products in factories and workshops.

Digital and technology

There are jobs that use computers, software, and digital tools. These roles can include basic IT support, design, or working with data.

A Helpful Reminder

Most people do not start in their final job.

Many jobs begin with:

- entry-level roles
- training
- courses or apprenticeships

Skills can be built over time.

The next section gives **top tips** to help you choose your next step.

Top Tips for Choosing Your Next Step

Planning what to do after Year 11 can take time. These tips can help you move forward in a simple way.

Take It One Step at a Time

You do not need to decide everything now.

Focus on one small step, such as looking at a course or talking to someone.



Get Information

Use this guide to:

- look at different subjects
- see what courses are available
- learn what support is offered

You can go back and check things more than once.

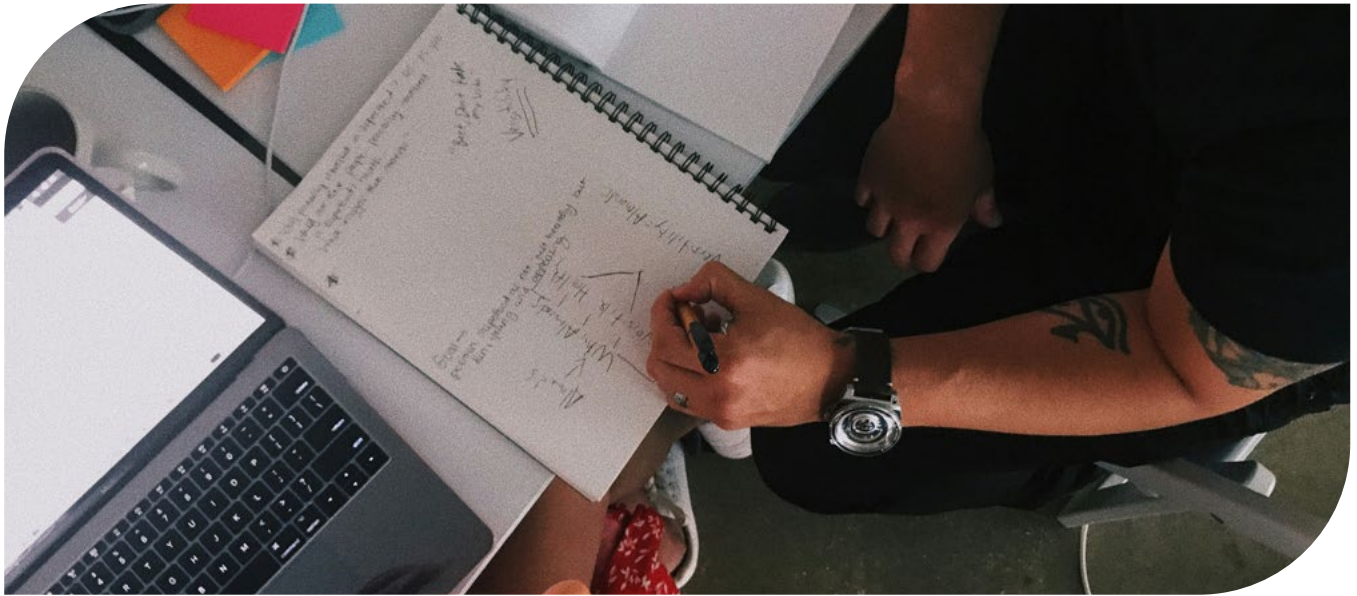
Talk to Someone

Talking things through can help.

You could talk to:

- someone at your school
- a parent or carer
- a careers adviser
- a support worker

You do not have to make choices on your own.



Try Things Out If You Can

If possible, you might:

- go to a taster day
- visit a college
- look at a course website

Seeing a place or course can make it feel clearer.

Be Kind to Yourself

Change can feel hard. It is okay to feel unsure.

Everyone moves forward in different ways and at different speeds.

Remember

This is **your journey**. Choose what feels right for you.

What's on Offer in Sheffield

This part of the guide shows the **courses you can study in Sheffield** and **where you can study them**.

Courses are grouped by **subject and career area**. This helps you see which options match your interests.

What You Will Find in Each Section

Each section explains:

1. what the subject or career area is about
2. the courses available in Sheffield
3. the types of jobs available in this area
4. jobs you can do with more training or experience

Some courses help you learn job skills. Some help you build confidence and independence. All are valid options.

I'm interested in... Engineering

The engineering sector is all about designing and building things to make life better. Engineers use science and math to solve problems and create things we use every day, like roads, bridges, machines, and new technology. Different types of engineers work on different projects: for example, civil engineers focus on roads and bridges, mechanical engineers design machines, electrical engineers work with electronics, and software engineers create computer programs.

Engineering is important because it helps improve the world around us. Engineers often work in teams to turn their ideas into reality, making it a great field for people who enjoy problem-solving and technology. There are many opportunities to learn and grow in engineering, which makes it an exciting career choice!

Below are the available courses, their entry requirements and the name of the school or college who delivers them.

Course	Entry Requirements	Provider
Engineering Level 1	4 GCSEs at grade 2 or above to include English Language and Maths	The Sheffield College
Engineering Level 2	4 GCSEs at grade 3 or above to include English Language, Maths and Science	The Sheffield College

Where could these courses take you?

Early careers in this sector include engineering technician, manufacturing technician, mechanical assembly technician, maintenance technician, quality inspector, engineering operative, production operative, CAD technician, design technician and mechanical design assistant.

What other jobs are there in this area?

Other roles which would require further specific training, qualifications or experience include software engineer, manufacturing engineer, quality assurance engineer, electrical engineer, civil engineer, mechanical engineering system engineer, environmental engineer or research and development engineer.



How This Can Help You

Looking at these sections can help you:

- understand different types of work
- see what learning might suit you
- think about your next step

You do not need to choose straight away.

A Helpful Reminder

You are not choosing your whole future here.

You are exploring options and finding what feels right for you now.

Provider Websites

These links take you to provider websites. You can use them to check courses, support, and how to apply.

You do not need to visit every website. Start with the providers you are interested in.

Provider	Website
Sheaf Training	lifelong-learning.sheffield.gov.uk/about-sheaf-training
The Sheffield College	sheffcol.ac.uk
Nacro	nacro.org.uk/nacro-services/nacro-education/nacro-education-sheffield
Choices College (Supported Internships)	hee.nhs.uk/our-work/choices-college-supported-internships
Kenwood Academy	kenwoodacademy.co.uk

Provider	Website
Longley Park Sixth Form	longleypark.ac.uk
Talbot Specialist School	talbotlearningcommunity.org.uk/our-school/curriculum/post-16-prep-for-adult-life
Bents Green School Sixth Form	bentsgreenschool.co.uk/page/?title=Post+16+Curriculum&pid=41
Seven Hills School	sevenhillslearning.co.uk/curriculum_pages/post-16/
CTS Training	ctstraining.co.uk
Learning Curve Group	learningcurvegroup.co.uk
Sheffield United Football Club	sufc-community.com/communitycollege
Sheffield Wednesday Football Club	swfccp.co.uk/college

Subject Areas and Courses

Click on a subject area below to see the courses available:

- 29 [Developing Life Skills](#)
- 30 [Developing Life, Work and/or Academic Skills](#)
- 33 [Developing Work Skills](#)
- 36 [Animals](#)
- 39 [Business](#)
- 41 [Construction](#)
- 44 [Digital and Creative Industries](#)
- 48 [Early Years and Education](#)
- 50 [Engineering](#)
- 52 [Hair and Beauty](#)
- 55 [Health and Social Care](#)
- 58 [Horticulture and the Environment](#)
- 60 [Hospitality and Catering](#)
- 63 [Humanities](#)
- 65 [IT and Computing](#)
- 67 [The Military](#)
- 69 [Motor Vehicle](#)
- 71 [Performing Arts and Music](#)
- 74 [Psychology](#)
- 76 [Public Services](#)
- 78 [Science](#)
- 80 [Sport](#)
- 83 [Travel and Tourism](#)



I'm Interested in...

Developing Life Skills

These Life Skills courses for young people are all about helping you become more independent and confident in everyday life. You'll learn important skills through fun activities like travel training, getting involved in your community, cooking, and working as a team. These exciting experiences will help you discover new interests, make new friends, and feel more independent as you grow!



Below are the available courses, their entry requirements and the name of the school or college who delivers them.

Course	Entry Requirements	Provider
Personal Progress	No formal entry requirements	Sheaf Training
Pathway to an Enriched Adult Life	No formal entry requirements	Talbot Sixth Form

These courses support students in gaining skills for everyday life and discovering their place in the community.



I'm interested in...

Developing Life, Work and/or Academic Skills

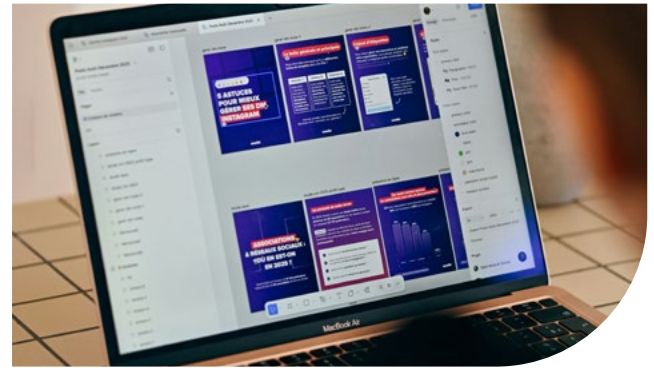
These courses are all about helping you become more independent, confident, and ready for everyday life. You'll have the chance to try out different activities that will not only let you discover new interests but also help you figure out what you might want to study in the future. This is really important as you start to grow up and prepare for the world of work. You'll build your confidence, make new friends, and learn to do things on your own!

Below are the available courses, their entry requirements and the name of the school or college who delivers them.

Course	Entry Requirements	Provider
Personal Progress Plus	No formal entry requirements	Sheaf Training
Discovery	No formal entry requirements	Sheaf Training
Pathway to Independent Living	No formal entry requirements	Sheffield College Bloom: Preparation for Adulthood



Course	Entry Requirements	Provider
Pathway to Personal Progress	No formal entry requirements	Sheffield College Bloom: Preparation for Adulthood
Foundation Studies	No formal entry requirements	Sheffield College Bloom: Preparation for Adulthood
Pre-Technical Studies	Entry Requirements to be discussed at interview	Sheffield College
Foundation Studies	Entry Requirements to be discussed at interview	Sheffield College
Life Skills Level 1	No formal entry requirements	Nacro
Pathway to a Supported Adult Life	No formal entry requirements	Talbot Sixth Form
Pathway to an Independent Adult Life	No formal entry requirements	Talbot Sixth Form



Course	Entry Requirements	Provider
Preparation for Adulthood	No formal entry requirements	Bents Green Sixth Form (Enterprise Works)
Engagement Pathway	No formal entry requirements	Bents Green Sixth Form (Ringinglow)
Independence Pathway	No formal entry requirements	Bents Green Sixth Form (Ringinglow)
Building Bridges to Adulthood: Pathway to Independence	No formal entry requirements	Seven Hills School Sixth Form

These courses support students in gaining skills for everyday life, discovering their place in the community and help them decide what subjects they might want to study in the future.



I'm Interested in...

Developing Work Skills



These Work Skills courses are made for young people with SEND to help you build confidence and learn about the world of work. You'll get hands-on experiences through meaningful work placements, which will give you a taste of what different jobs are like. These courses will help you develop useful skills, discover your strengths, and figure out which careers you're interested in. By learning what you're good at, you'll be ready to make the right choices about future jobs!

Below are the available courses, their entry requirements and the name of the school or college who delivers them.

Course	Entry Requirements	Provider
Career Boost	No formal entry requirements	Sheaf Training
Supported Internship	18+, hold an EHCP and a desire to work	Sheaf Training
Supported Internship	No formal entry requirements	Sheffield College Bloom: Preparation for Adulthood



Course	Entry Requirements	Provider
Supported Pathway to Work	No formal entry requirements	Sheffield College Bloom: Preparation for Adulthood
Skills for Living and Work	No formal entry requirements	Sheffield College Bloom: Preparation for Adulthood



Course	Entry Requirements	Provider
Work Skills	18+, hold an EHCP and a desire to work	Nacro
Get Set Level 1	No formal entry requirements	Nacro
Supported Internships	18+, hold an EHCP and a desire to work	Choices College
Personal Development for Employability Entry Level 3	Please ask provider	CTS Training
Certificate in Personal Development for Employability Level 1	Please ask provider	CTS Training
Certificate in Personal Development for Employability Level 2	Please ask providers	CTS Training

Students who finish these courses have gone on to get jobs, start apprenticeships, or volunteer in different roles. These courses help you explore and choose the right career for you, whether it's in retail, office work, hospitality, or other exciting areas.



I'm Interested in...

Animals

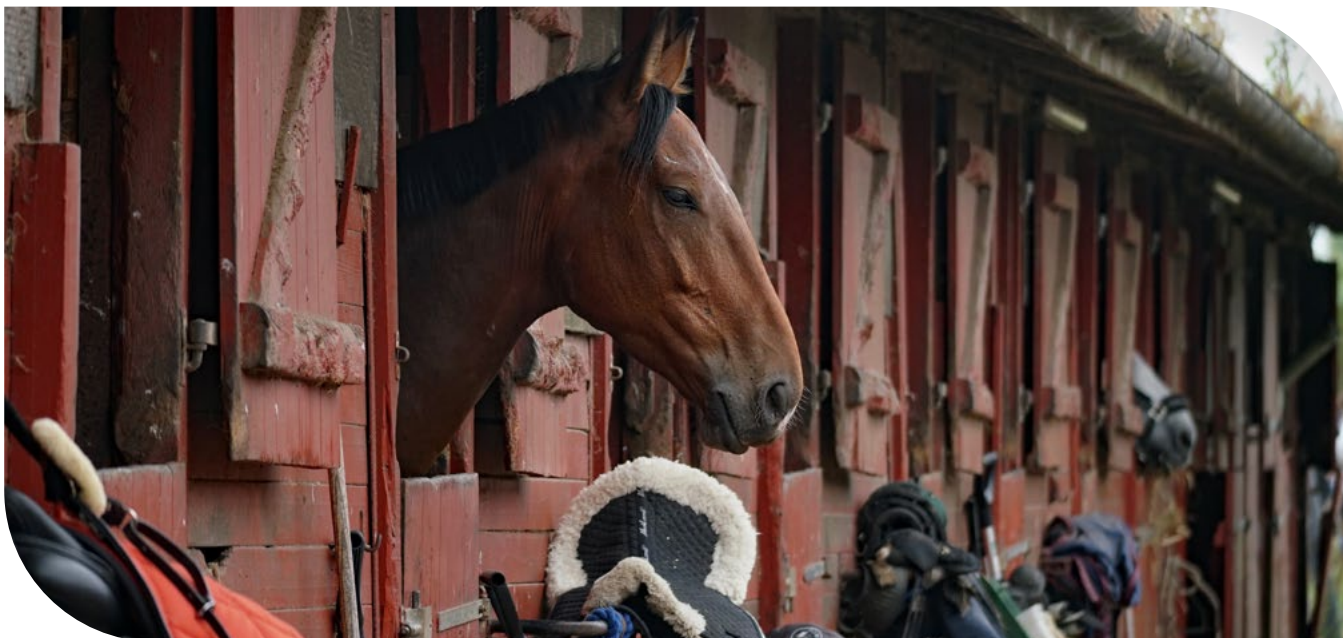
The animal sector is all about working with animals and making sure they are happy and healthy. People in this field can work in places like vet clinics, farms, animal shelters, zoos, or wildlife conservation centres. They help animals stay healthy, find them loving homes, or learn about them to protect their natural habitats. This work is perfect for anyone who loves animals and wants to help make their lives better!

Below are the available courses, their entry requirements and the name of the school or college who delivers them.

Course	Entry Requirements	Provider
Animal Care Level 1	No formal entry requirements, but you must have a passion for the care of animals and a good work ethic	Nacro
Animal Care Level 2	Previous level 1 Animal Care qualification is desirable. Alternatively, you must have a passion for the care of animals and a good work ethic and hold at least Level 1 English and Maths	Nacro



Course	Entry Requirements	Provider
Animal Care Level 2	4 GCSEs at grade 3 or above to include English Language, Maths and Science	The Sheffield College
Land Based Studies Level 1	4 GCSEs at grade 2 or above to include English Language, Maths and Science	The Sheffield College
Animal Care Level 1	Please ask provider	Kenwood Academy
Animal Care Level 2	Please ask provider	Kenwood Academy



Where could these courses take you?



This work sector includes jobs where people look after pets, farm animals, and even wild animals.

Some examples of early careers in this sector are animal care assistant, kennel assistant, pet grooming assistant, dog walker, pet shop assistant, farm hand, stable hand, and wild life assistant.

What other jobs are there in this area?



Other roles which would require further specific training, qualifications or experience include veterinary nurse, veterinarian, animal trainer, wildlife biologist, marine biologist, zookeeper, animal behaviourist, animal shelter manager, conservation officer and equine specialist.



I'm Interested in...

Business

The business sector is all about how companies and organisations make things to sell to customers. This includes many different types of businesses, like shops, restaurants, and technology companies.

People who work in this area might do jobs in marketing (getting people to buy things), finance (managing money), human resources (helping employees), or management (running the business). Their jobs could be about selling products, planning events, or making sure everything runs smoothly.

This sector is great for those who enjoy working with others, solving problems, and being creative. There are lots of exciting career opportunities, and it's a fun field where you can really make a difference in the economy and your community!





Below are the available courses, their entry requirements and the name of the school or college who delivers them.

Course	Entry Requirements	Provider
Business level 1	4 GCSEs at grade 2 or above to include English Language	The Sheffield College
Business level 2	4 GCSEs at grade 3 or above to include English Language or Maths at grade 4	The Sheffield College
Business BTEC Level 2	2 GCSEs at grade 3 or above	Longley Park Sixth Form College

Where could these courses take you?



business administration assistant, customer service representative, operations assistant, quality control assistant, retail assistant, sales assistant, human resources assistant, junior project coordinator, or digital marketing assistant.

What other jobs are there in this area?



Other roles which would require further specific training, qualifications or experience include business administrator, human resources officer, accountant, business analyst, logistics coordinator or paralegal.



I'm Interested in...

Construction

The construction sector is all about building things like houses, schools, offices, and bridges. There are lots of different jobs in this field, from coming up with designs to actually putting the buildings together. The construction sector is really important because it helps create the places where we live, work, and have fun.

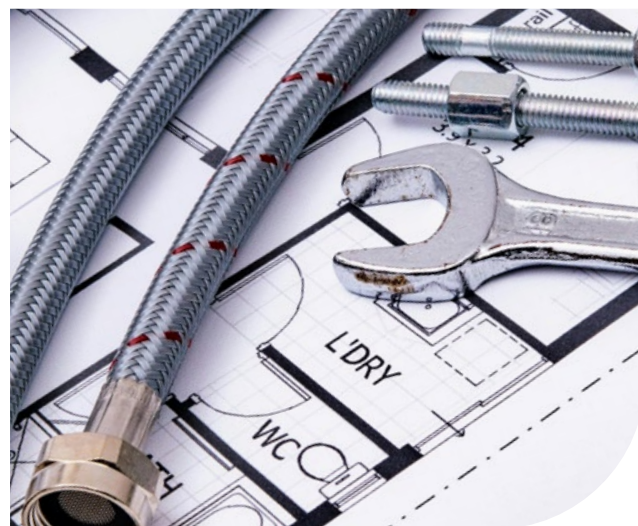
This is a great field for people who like working with their hands, solving problems, and being part of a team. Plus, there are many chances to learn new skills and grow in this industry!

Below are the available courses, their entry requirements and the name of the school or college who delivers them.

Course	Entry Requirements	Provider
Construction (Multi-Trades)	No formal entry requirements. Minimum 1-year prior learning in post-16 education preferred	Sheaf Training
Brickwork Level 1	4 GCSEs at grade 2 or above to include English Language	The Sheffield College
Carpentry and Joinery Level 1	4 GCSEs at grade 2 or above to include English Language	The Sheffield College



Course	Entry Requirements	Provider
Electrical Installation Level 1	4 GCSEs at grade 2 or above to include English Language	The Sheffield College
Plumbing Level 1	4 GCSEs at grade 2 or above to include English Language, Maths and Science.	The Sheffield College
Construction and the Built Environment Level 1	Please ask provider	Kenwood Academy
Construction and the Built Environment Level 2	Please ask provider	Kenwood Academy





Course	Entry Requirements	Provider
Construction Level 1	No entry requirements, but you must have a passion for working in the construction industry	Nacro

Where could these courses take you?



Examples of early careers in this sector are construction labourer, bricklayer, painter and decorator, plumber, crane driver electrician or joiner.

What other jobs are there in this area?



Other roles which would require further specific training, qualifications or experience include construction manager, architect, civil engineer, project manager, surveyor, safety officer or building inspector.



I'm Interested in...

Digital and Creative Industries

The digital and creative sector is all about using technology and creativity to make cool things like websites, games, videos, art, and music. People who work in this area do jobs like graphic design, animation, photography, video production, and social media.

This field is perfect for anyone who loves working with computers, dreaming up new ideas, and using their imagination. There are lots of ways to learn and grow, and it's a really exciting area to be a part of as technology keeps changing!

Below are the available courses, their entry requirements and the name of the school or college who delivers them.

Course	Entry Requirements	Provider
Introduction to Creative Industries	No formal entry requirements Minimum 1-year prior learning in post-16 education preferred	Sheaf Training
Digital Media	No formal entry requirements Minimum 1-year prior learning in post-16 education preferred	Sheaf Training



Course	Entry Requirements	Provider
Art and Design Level 1	3 GCSEs at grade 2 or above to include English Language.	The Sheffield College
Art and Design Level 2	4 GCSEs at grade 3 or above to include English Language and an art related subject	The Sheffield College
Games Design Level 1	3 GCSEs at grade 2 or above to include English Language	The Sheffield College



Course	Entry Requirements	Provider
Games Design Level 2	4 GCSEs at grade 3 or above to include English Language	The Sheffield College
Mixed Media Level 1	3 GCSEs at grade 2 or above to include English Language.	The Sheffield College
Photography and Journalism Level 2	4 GCSEs at grade 3 or above to include English Language	The Sheffield College
Film and TV Level 2	4 GCSEs at grade 3 or above to include English Language	The Sheffield College
Essential Digital Skills (Open Awards Qualification)	No formal entry requirements	Bents Green
Arts Award (Silver) Creative and Digital Media	Please ask provider	Kenwood Academy
GCSE Art	Please ask provider	Kenwood Academy
Level 2 in ESports (Electronic Sports)	No formal entry requirements	Sheffield United Football Club



Course	Entry Requirements	Provider
Art and Design UAL Level 2 Diploma	At least 2 grade 3s at GCSE	Longley Park Sixth Form College

Where could these courses take you?



Jobs in digital and creative fields can include creating content for websites, designing logos, editing videos, or even building apps and games. This sector is important because it helps businesses connect with people and makes information easy and fun to understand.

Early careers include: photography assistant, production runner, junior graphic assistant, camera assistant, lighting assistant, production assistant, gallery assistant, interactive media assistant, printmaking assistant, junior art assistant, or social media assistant.



What other jobs are there in this area?



Other roles which would require further specific training, qualifications or experience include photographer, graphic designer, creative director, games designer, animator, art director or digital marketing specialist.



I'm Interested in...

Early Years and Education

The early years and education career area is about helping babies, children, and students learn new skills and feel safe and happy. It includes nurseries, primary schools, secondary schools, colleges, and universities in Sheffield and across the UK. People who work in this area support children with play, lessons, talking, reading, numbers, and getting used to daily routine.

This career area is good for people who enjoy sharing what they know, helping others, and working as part of a team. You can make a real difference in your community by helping children grow, make friends, and become more independent. There are many different job options, so this can suit lots of strengths and interests.

Below are the available courses, their entry requirements and the name of the school or college who delivers them.

Course	Entry Requirements	Provider
Education and Early Years Level 1	4 GCSEs at grade 2 or above to include English Language	The Sheffield College
Education and Early Years Level 2	4 GCSEs at grade 3 or above to include English Language and Maths	The Sheffield College



Course	Entry Requirements	Provider
Cache Level 2 Diploma for the Early Years Practitioner	A minimum of 2 GCSEs at grade 3 or above	Longley Park Sixth Form College

Where could these courses take you?



These early years and education courses can lead you to entry level jobs such as playworker in holiday clubs, childcare assistant in a nursery, nursery nurse, teaching assistant in schools, learning support assistant, SEND assistant helping students with additional needs, or Early years educator supporting young children each day with games and learning. In these roles you help with play, classroom work, meals, and calm routines while you keep building more training and experience.

What other jobs are there in this area?



Other roles which would require further specific training, qualifications or experience beyond Level 2 include primary school teacher, secondary school teacher, early years educator at Level 3 or above, special educational needs teacher, further education lecturer in colleges, special educational needs coordinator, called a SENCo, or careers adviser in education teams. These jobs need higher study, but the skills you start building in early years and education are important first steps toward them.



I'm Interested in...

Engineering

The engineering sector is all about designing and building things to make life better. Engineers use science and math to solve problems and create things we use every day, like roads, bridges, machines, and new technology. Different types of engineers work on different projects; for example, civil engineers focus on roads and buildings, mechanical engineers design machines, electrical engineers work with electronics, and software engineers create computer programs.

Engineering is important because it helps improve the world around us. Engineers often work in teams to turn their ideas into reality, making it a great field for people who enjoy problem-solving and technology. There are many opportunities to learn and grow in engineering, which makes it an exciting career choice!

Below are the available courses, their entry requirements and the name of the school or college who delivers them.

Course	Entry Requirements	Provider
Engineering Level 1	4 GCSEs at grade 2 or above to include English Language and Maths	The Sheffield College
Engineering Level 2	4 GCSEs at grade 3 or above to include English Language, Maths and Science	The Sheffield College



Where could these courses take you?



Early careers in this sector include engineering technician, manufacturing technician, mechanical assembly technician, maintenance technician, quality inspector, engineering operative, production operative, CAD technician, design technician and mechanical design assistant.

What other jobs are there in this area?



Other roles which would require further specific training, qualifications or experience include software engineer, manufacturing engineer, quality assurance engineer, electrical engineer, civil engineer, mechanical engineer, system engineer, environmental engineer or research and development engineer.



I'm Interested in...

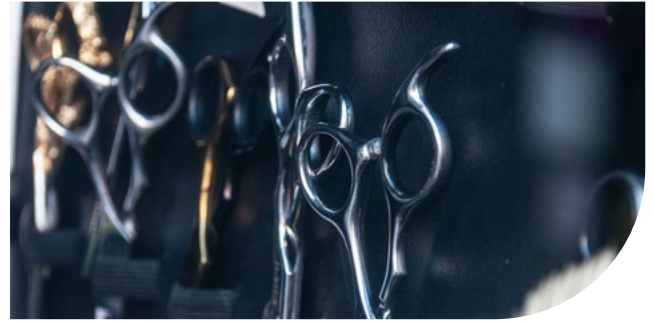
Hair and Beauty

The hair and beauty sector is all about making people look and feel amazing! This industry includes jobs where people cut and style hair, do makeup, provide skincare treatments, and give manicures and pedicures.

If you enjoy being creative and working with your hands, this is a great field for you! You get to help others feel confident and happy about themselves. It's a hands-on job with plenty of chances to learn new skills and make friends with your clients.

Below are the available courses, their entry requirements and the name of the school or college who delivers them.

Course	Entry Requirements	Provider
Hair and Beauty Level 1	4 GCSEs at grade 2 or above to include English Language and Maths	The Sheffield College
Beauty Therapy Level 2	4 GCSEs at grade 4 or above to include English Language and Maths	The Sheffield College
Hair and Media Make up Level 2	4 GCSEs at grade 4 or above to include English Language and Maths	The Sheffield College



Course	Entry Requirements	Provider
Hairdressing Level 2	4 GCSEs at grade 4 or above to include English Language and Maths	The Sheffield College
Barbering Level 2	4 GCSEs at grade 3 or above to include English Language or Maths at grade 4	The Sheffield College
Hair and Beauty Skills Level 1	Applicants must be aged 16-19 and have a genuine interest in the hair and beauty industry	Learning Curve Group
Beauty Therapy Level 2	Applicants must be aged 16-19 and have a genuine interest in the hair and beauty industry	Learning Curve Group
Hairdressing Level 2	Applicants must be aged 16-19 and have a genuine interest in the hair and beauty industry	Learning Curve Group

Course	Entry Requirements	Provider
Barbering Level 2	Applicants must be aged 16-19 and have a genuine interest in the hair and beauty industry	Learning Curve Group
Nail Services Level 2	Applicants must be aged 16-19 and have a genuine interest in the hair and beauty industry	Learning Curve Group
Hair and Media Make-Up Level 2	Applicants must be aged 16-19 and have a genuine interest in the hair and beauty industry	Learning Curve Group

Where could these courses take you?



People working in hair and beauty often work in salons, spas, or sometimes even on film and TV sets. Some jobs include hairstylists, barbers, beauty therapists, nail technicians, and makeup artists.

What other jobs are there in this area?



Other roles which would require further specific training, qualifications or experience include senior hair stylist/courist, salon manager, spa therapist, nail technician, aesthetic practitioner, holistic therapist, men's grooming specialist, senior barber, barber shop manager or hair and beauty trainer.



I'm Interested in...

Health and Social Care



The health and social care sector is all about helping people stay healthy and giving support to those who need extra help in their daily lives. This includes caring for patients in hospitals, assisting older people at home or in care homes, working with individuals who have physical or learning disabilities, helping those with mental health challenges, and supporting children and their families.

This field is perfect for people who love to help others, are good listeners, and want to make a difference in people's lives. There are many rewarding jobs available, and you can learn new things and grow in your career while making the world a better place!



Below are the available courses, their entry requirements and the name of the school or college who delivers them.

Course	Entry Requirements	Provider
Health and Social Care Level 1	4 GCSEs at grade 2 or above to include English Language and DBS check	The Sheffield College
Health and Social Care Level 2	4 GCSEs at grade 3 or above to include English Language and DBS check	The Sheffield College
Health and Social Care Level 2 Certificate	At least 2 grade 3s at GCSE	Longley Park Sixth Form College



Course	Entry Requirements	Provider
Health and Social Care Level 1	Please ask provider	Kenwood Academy

Where could these courses take you?



People who work in health and social care help others in different ways. They may care for people who are ill or getting better, give advice on how to stay healthy, or work in teams that collect medical samples to find out why someone is unwell. Many people say these jobs are very rewarding, especially if you like helping others.

Jobs in this area include nursing, being a paid carer, working in social care, and providing therapy. You could also be a care assistant, health support worker, activities coordinator, personal assistant, or support worker. These roles can be in hospitals, people's homes, care homes, or day centres.

What other jobs are there in this area?



Other roles which would require further specific training, qualifications or experience include registered nurse, social worker, paramedic, speech and language therapist, physiotherapist, occupational therapist, care/case coordinator, midwife, counsellor/psychotherapist, or health and social care manager.





I'm Interested in...

Horticulture and the Environment

The horticulture and environmental sector is all about taking care of our planet and finding ways to help it stay healthy. This includes jobs that involve growing plants, flowers, and crops, as well as taking care of gardens and natural spaces. People in this sector also work to conserve resources, reduce pollution, and promote renewable energy sources like solar and wind power.

This field is perfect for those who care about the environment and want to make a positive difference in the world. There are lots of exciting career options that help protect our planet for future generations!

Below are the available courses, their entry requirements and the name of the school or college who delivers them.

Course	Entry Requirements	Provider
Land Based Studies Level 1	4 GCSEs at grade 2 or above to include English Language, Maths and Science	The Sheffield College
Horticulture Level 2	4 GCSEs at grade 3 or above to include English Language	The Sheffield College



Course	Entry Requirements	Provider
Outdoor Learning (Open Awards Entry Level)	No formal entry requirements	Bents Green

Where could these courses take you?



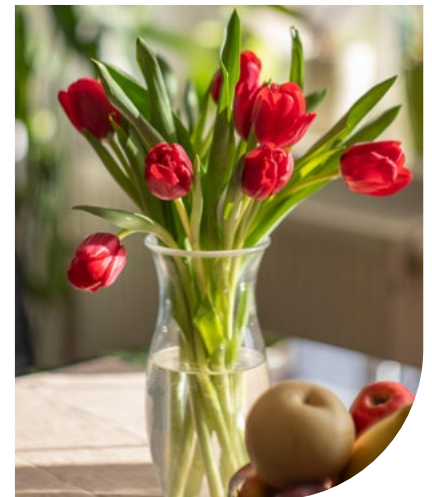
Garden centre assistant, ground maintenance worker, horticulturist assistant, landscape technician, farm worker, park ranger, florist or floral assistant.



What other jobs are there in this area?



Other roles which would require further specific training, qualifications or experience include botanist, landscape designer, specialist florist, horticulturist, conservation officer, ecologist, environmental consultant, agricultural or horticultural scientist, environmental policy analyst, sustainability manager, recycling management officer, climate change analyst or hydrologist specialist.



I'm Interested in...

Hospitality and Catering



The hospitality and catering sector is all about serving food and drinks and making customers feel welcome. This includes jobs in places like hotels, restaurants, cafes, and at events. People who work in hospitality and catering help guests feel comfortable, enjoy tasty food, and have a great time.

Jobs in this field can include cooking, serving meals, greeting guests, or helping to plan fun events. It's a perfect choice for anyone who likes working with others, being part of a team, and creating a friendly atmosphere for customers!

Below are the available courses, their entry requirements and the name of the school or college who delivers them.

Course	Entry Requirements	Provider
Hospitality and Catering	No formal entry requirements	Sheaf Training
Hospitality and Catering Entry Level	No formal entry requirements	The Sheffield College



Course	Entry Requirements	Provider
Bakery Level 1	4 GCSEs at grade 2 or above to include English Language	The Sheffield College
Catering and Hospitality Level 1	4 GCSEs at grade 2 or above to include English Language	The Sheffield College
Catering Level 1	No formal entry requirements	Nacro
Catering Level 2	You need to have completed Level 1 Catering. GCSE grade 2 or above in English and maths or E3 Functional Skills	Nacro

Course	Entry Requirements	Provider
Home Cooking Skills Level 1	Please ask provider	Kenwood Academy
Home Cooking Skills Level 2	Please ask provider	Kenwood Academy
Food Technology (BTEC Home Cooking Qualification)	No formal entry requirements	Bents Green

Where could these courses take you?



Examples of early careers in this sector are kitchen assistant, waiter/waitress, barista, catering assistant, baker, and commis chef.

What other jobs are there in this area?



Other roles which would require further specific training, qualifications or experience include pastry chef, sous chef, chef de partie, head chef, bar/café or restaurant manager.



I'm Interested in...

Humanities



Humanities subjects are about learning how people think, live and communicate. You will read stories, talk about ideas, and learn about how people live in different places and times. Humanities is good for people who like reading, writing, talking with others, and learning about the world around them.

Below are the available courses, their entry requirements and the name of the school or college who delivers them



Course	Entry Requirements	Provider
GCSE English Literature	Please ask provider	Kenwood Academy
Transition to A Level Social Science (Level 2)	At least 2 grade 3s at GCSE and a 4 in English Language	Longley Park Sixth Form College



Where could these courses take you?



These courses help you improve communication skills like reading, writing, speaking and listening. These skills are useful in many different jobs. After these courses you could go on to further study at college or start work in jobs such as customer service assistant, classroom assistant, office support worker, library assistant, youth support worker or community project helper. Employers in Sheffield and across the UK look for people who can communicate well and work with others.

What other jobs are there in this area?



Other jobs that need more training, qualifications or experience beyond Level 2 include teacher, lecturer, social worker, police officer, housing officer, journalist, media worker and policy or research assistant. These jobs usually need further study or specific training.



I'm Interested in...

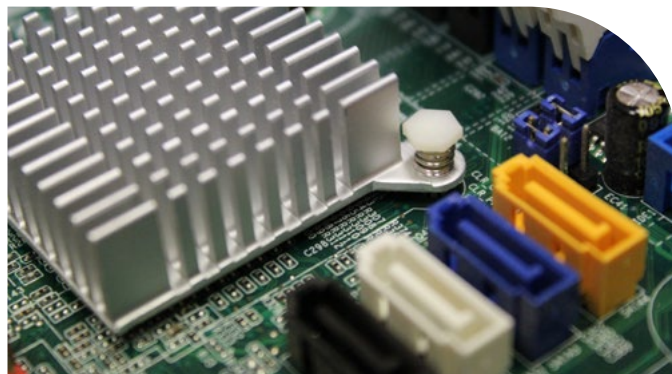
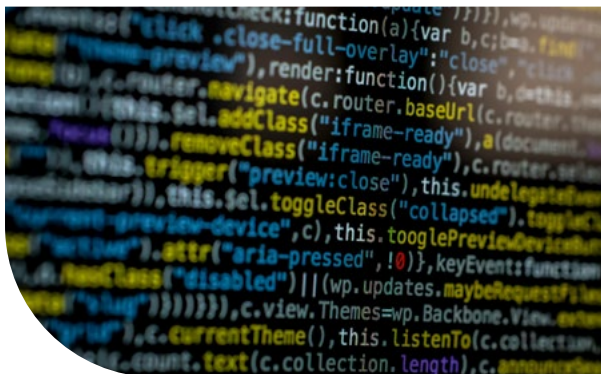
IT and Computing

The IT and computing sector is all about working with computers, software, and technology to help people and businesses stay connected and solve problems. Jobs in this area include setting up and fixing computers, writing programs, building websites, creating apps, and keeping data safe from cyber threats.

This field is perfect for anyone who loves solving problems, learning about new technology, and working with computers. There are lots of exciting career paths to choose from, and as technology keeps changing, there are always new skills to learn and new jobs to discover!

Below are the available courses, their entry requirements and the name of the school or college who delivers them.

Course	Entry Requirements	Provider
IT and Digital Skills Level 1	4 GCSEs at grade 2 or above to include English Language and Maths	The Sheffield College
Computing Level 1	Please ask provider	Kenwood Academy
Computing Level 2	Please ask provider	Kenwood Academy



Course	Entry Requirements	Provider
Information and Creative Technology Level 2	At least 2 grade 3s at GCSE	Longley Park Sixth Form College

Where could these courses take you?



IT support assistant, data entry clerk, office administrator, IT technician, help desk support, junior network assistant, digital marketing assistant, content creator, junior cyber security assistant, IT support and security technician or junior security analyst.

What other jobs are there in this area?



Other roles which would require further specific training, qualifications or experience include web developer, software developer, data analyst, IT support manager, or cyber security analyst.

I'm Interested in...

The Military



The military is about serving your country and helping keep people safe. There are different parts of the military, like the Army, Royal Navy and Royal Air Force, called the RAF. People in the military might train hard, work as part of a team, learn to use equipment, help in emergencies and travel to new places. It can be a great choice if you like structure, enjoy learning practical skills, and want to do something important.

Below are the available courses, their entry requirements and the name of the school or college who delivers them



Course	Entry Requirements	Provider
Military Preparation	Applicants must be aged 16-19 and have a genuine interest in the Military, Uniformed Services or Fitness.	Learning Curve Group



Where could these courses take you?



After these courses you could start in entry level roles such as Army recruit, Infantry trainee, Royal Navy recruit, Royal Marines trainee, RAF recruit, logistics or supply assistant, vehicle maintenance trainee, engineering or technical trainee, communications trainee, cyber security trainee, military police trainee, and general armed forces base support roles. These are jobs where people begin their career, build experience and continue learning while they complete further training.

What other jobs are there in this area?



Other roles that need more training, qualifications or experience beyond a level 2 qualification include soldier in a specific regiment, sailor or marine in a qualified post, RAF aircrew positions, qualified logistics specialist, vehicle technician, engineering technician, communications or cyber technician at an advanced level, military police and RAF police, medical technician or forces medic, officer training routes, defence intelligence analyst, and leadership and management roles within the Ministry of Defence or the UK Armed Forces.



I'm Interested in...

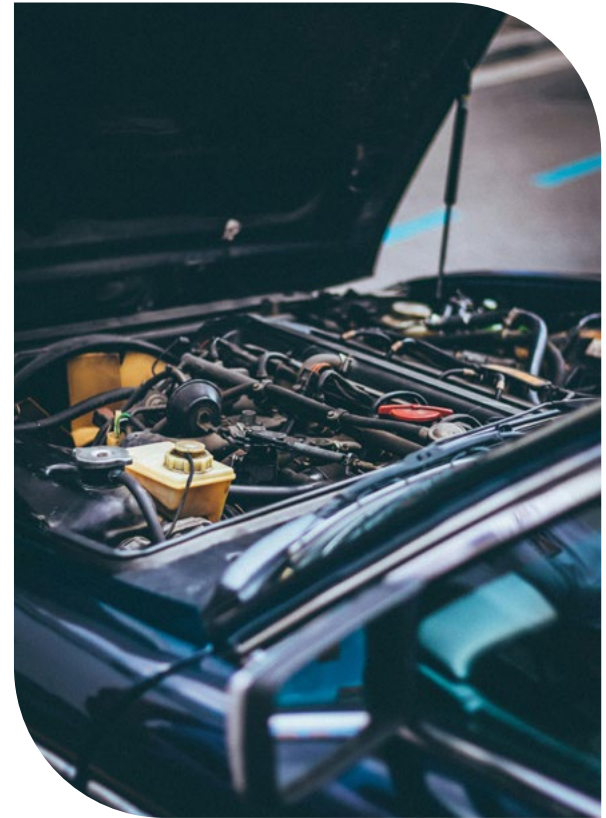
Motor Vehicle



The motor vehicle sector is all about cars and other vehicles. This industry covers everything from designing and building vehicles to fixing and taking care of them.

This sector is important because it helps people travel safely and move things from one place to another. It's a great field for those who like working with their hands, solving problems, and learning about technology. There are lots of chances to learn new skills and grow in this industry!

Below are the available courses, their entry requirements and the name of the school or college who delivers them.



Course	Entry Requirements	Provider
Motor Vehicle Accident Repair Level 1	4 GCSEs at grade 2 or above to include English Language and Maths	The Sheffield College



Course	Entry Requirements	Provider
Motor Vehicle Maintenance and Repair Level 1	4 GCSEs at grade 2 or above to include English Language and Maths	The Sheffield College
Vehicle Fitting Level 2	4 GCSEs at grade 3 or above to include English Language or Maths at grade 4	The Sheffield College
Motor Vehicle Level 1	No entry requirements, but you must have a passion for working with light vehicles	Nacro

Where could these courses take you?



Early careers in the motor vehicle industry include mechanic, automotive technician, service advisor, vehicle detailing technician, collision repair technician, tire technician or vehicle inspector.

What other jobs are there in this area?



Other roles which would require further specific training, qualifications or experience include diesel mechanic, automotive engineer, vehicle design engineer or electric vehicle technician.



I'm Interested in...

Performing Arts and Music

The performing arts and music sector is all about being creative and expressing yourself through things like acting, dancing, singing, and playing instruments. It includes fun events like theatre shows, dance performances, music concerts, and other live activities where people can show off their talents.

This sector is perfect for those who love being creative, enjoy teamwork, and want to share their skills with others. There are lots of exciting job options, whether you want to perform on stage, create music, or help out behind the scenes to make shows happen. The performing arts and music sector is a lively place that celebrates culture and brings people together through creativity.

Below are the available courses, their entry requirements and the name of the school or college who delivers them.

Course	Entry Requirements	Provider
Performing and Production Arts Level 2	4 GCSEs at grade 3 or above to include English Language and an art related subject	The Sheffield College
Music Level 2	4 GCSEs at grade 3 or above to include English Language	The Sheffield College



Course	Entry Requirements	Provider
Music Technology Level 2	4 GCSEs at grade 3 or above to include English Language	The Sheffield College
Music Level 1	Please ask provider	Kenwood Academy
Music Level 2	Please ask provider	Kenwood Academy
Performing Arts Level 1	Please ask provider	Kenwood Academy
Performing Arts Level 2	Please ask provider	Kenwood Academy

Where could these courses take you?



In the performing arts, you can find actors, dancers, musicians, directors, and stage crew who work together to create entertaining shows. People in this field often practice for many hours to perfect their skills and put on great performances for audiences.

These courses could lead you to jobs like these: music assistant, sound technician, theatre technician, entry level actor/dancer, or stage assistant manager.

What other jobs are there in this area?



Other roles which would require further specific training, qualifications or experience include professional actor, musician, dancer or choreographer, voice artist, stage manager, theatre director, lighting technician, sound technician, music producer, costume designer, teaching, or talent agent.





I'm Interested in...

Psychology



Psychology is the study of how people think, feel and behave. People who work in psychology-related jobs help others understand themselves, stay well, and cope with life. These jobs can be in support services, schools, health settings, or community services. If you like listening to others, helping people solve problems and learning how the mind works, psychology careers might be a good fit for you.

Below are the available courses, their entry requirements and the name of the school or college who delivers them.

Course	Entry Requirements	Provider
GCSE Psychology	Please ask the provider.	Kenwood Academy





Where could these courses take you?



Studying psychology helps you build skills that are useful in many entry-level careers where you support people's wellbeing. Early jobs could include mental health support assistant, care assistant, youth support worker, classroom assistant, community support worker, wellbeing centre assistant and office assistant in health or social care teams. In these roles you can learn on the job, use what you've learned about people, and gain more experience while you continue your training.

What other jobs are there in this area?



There are many other careers linked to psychology that need more training, qualifications or experience. These include counsellor, assistant psychologist, educational psychologist, social worker, clinical psychologist, mental health nurse, occupational therapist, speech and language therapist, and careers adviser. These jobs usually require higher qualifications or university study, but the skills you start building in psychology are important first steps toward them.



I'm Interested in...

Public Services

The public services sector is all about helping people and keeping our communities safe. This includes important organisations like the police, fire department, ambulance services, and local government. If you want to make a difference in your community and help others, this sector is a great fit for you! There are many different jobs you can do, like being a police officer, firefighter, social worker, or community support worker. Overall, this sector is really important because it helps keep everyone safe and healthy!

Below are the available courses, their entry requirements and the name of the school or college who delivers them

Course	Entry Requirements	Provider
Public Services Level 1	4 GCSEs at grade 2 or above to include English Language	The Sheffield College
Public Services Level 2	4 GCSEs at grade 3 or above to include English Language	The Sheffield College
Public Services Level 2	Please ask provider	CTS Training



Where could these courses take you?



People who work in public services are committed to making sure everyone gets the help they need. They are there in emergencies, keep us safe, and provide important services to the community. This includes helping during natural disasters, making sure everyone follows the law, and assisting people who need extra support.

These courses could lead you to jobs like these: police community support officer, trainee firefighter, emergency response assistant or community support officer.

What other jobs are there in this area?



Other roles which would require further specific training, qualifications or experience include police officer, paramedic, firefighter, youth worker, probation officer, community development worker, criminal justice professional, emergency management specialist, or housing officer.



I'm Interested in...

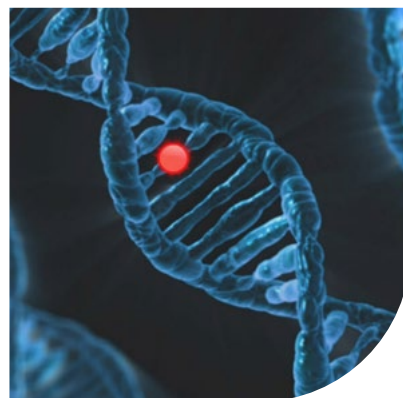
Science

The science sector is all about understanding how everything in the world works. This includes studying living things, exploring space, and creating new technologies. It covers different subjects like biology, chemistry, physics, and environmental science.

People who work in this field might be in labs, hospitals, or even outside, doing experiments, testing samples, or solving problems.

This sector is perfect for those who love asking questions, investigating, and learning new things. There are lots of exciting career paths available, all focused on making cool discoveries and improving our lives!

Below are the available courses, their entry requirements and the name of the school or college who delivers them.



Course	Entry Requirements	Provider
Science Level 1	4 GCSEs at grade 2 or above to include English Language	The Sheffield College



Course	Entry Requirements	Provider
Science Level 2	4 GCSEs at grade 3 or above to include English Language or Maths and Science	The Sheffield College
GCSE Biology	Please ask provider	Kenwood Academy
GCSE Science	Please ask provider	Kenwood Academy
Applied Science BTEC Level 2	2 GCSEs at grade 3 or above including Science	Longley Park Sixth Form College

Where could these courses take you?



Laboratory assistant, pharmacy assistant or healthcare science assistant.

What other jobs are there in this area?



Other roles which would require further specific training, qualifications or experience include pharmacist, forensic scientist, microbiologist, biomedical scientist, research scientist or laboratory technician.



I'm Interested in...

Sport



The sport sector is all about getting involved in sports, fitness, and staying active. There are many different jobs in this area, like helping people exercise, planning fun events, or working with professional athletes. It's a fantastic field for anyone who loves being active, working with others, and helping people reach their fitness or sports goals!

Below are the available courses, their entry requirements and the name of the school or college who delivers them.

Course	Entry Requirements	Provider
Sport Level 1	4 GCSEs at grade 2 or above to include English Language	The Sheffield College
Sport level 2	4 GCSEs at grade 3 or above to include English Language	The Sheffield College
Sport Level 1	Please ask provider	Kenwood Academy
Sport Level 2	Please ask provider	Kenwood Academy



Course	Entry Requirements	Provider
Sport Level 1	Please ask provider	CTS Training
Sport Level 1	There are no specific entry requirements, but you must have an interest in this topic area	Nacro
Sport Level 2	Experience of gym-based exercises, including free weights, is highly recommended. You will be required to have a degree of physical fitness and will need to be able to have completed Sport at Level 1 and should be working towards Level 1 Functional Skills in English and maths	Nacro
Level 2 in Sport (Coaching and Fitness)	No formal entry requirements	Sheffield United Football Club
Level 1 in Sport (Sport and Active Leisure)	No formal entry requirements	Sheffield Wednesday Football Club
Level 2 Diploma in Sport (Coaching Pathway)	Minimum of 4 GCSE between grade 3-1	Sheffield Wednesday Football Club



Where could these courses take you?



People in the sport sector might work as coaches, trainers, sports facility staff, or event organisers. They could help teach skills, keep people safe, support health and fitness, or even manage sports teams and events. Some examples of early careers in this sector are sports assistant, fitness instructor, lifeguard, sports coach assistant, outdoor activity instructor, event assistant, personal trainer and sports retail assistant.

What other jobs are there in this area?



Other roles which would require further specific training, qualifications or experience include sports coach, sports therapist, PE teacher, sports event manager and sports journalist.



I'm Interested in...

Travel and Tourism

The travel and tourism sector is all about helping people discover new places and have fun on their holidays. This includes jobs in travel agencies, tour companies, and transportation services like airlines and buses. If you love meeting new people, learning about different cultures, and sharing your passion for travel, this sector is perfect for you! There are many exciting job opportunities, whether you want to be a travel agent, a tour guide, a hotel manager, or do something else that makes travel enjoyable for everyone. Overall, this sector helps connect people to different cultures and create amazing experiences all around the world!

Below are the available courses, their entry requirements and the name of the school or college who delivers them.

Course	Entry Requirements	Provider
Aviation Level 2	4 GCSEs at grade 3 or above to include English Language and Maths	The Sheffield College
Travel and Tourism Level 2	4 GCSEs at grade 3 or above to include English Language and Maths	The Sheffield College
Travel and Tourism Level 1	Please ask provider	CTS Training



Where could these courses take you?



People who work in travel and tourism help plan trips, provide information about destinations, and ensure that travellers have a great experience. This can involve arranging transportation, booking accommodations, and organising activities for tourists. airport ground staff, flight attendant, airline customer service representative, or tour guide.

What other jobs are there in this area?



Other roles which would require further specific training, qualifications or experience include travel agent, tour manager, tourism development officer, airline operations manager, travel writer/blogger, cruise consultant, or sustainable tourism officer.

Other Useful Services

This page lists other services that can help you as you move on from school.

These services can support things like:

- travel and getting around
- planning for adult life
- wellbeing and mental health
- advice and information



Service	What They Do	Contact Details
Sheffield Local Offer	Information about SEND services for children and young people	Website: sheffielddirectory.org.uk/localoffer
Community Learning Disability Service	Health and community support for people with learning disabilities	Website: sheffield.gov.uk (via Adult Social Care)

Service	What They Do	Contact Details
Sheffield Parent Carer Forum	Support and information for parents and carers	Website: sheffieldparentcarerforum.org.uk Phone: 0300 321 4721
Autism Plus	Employment support for people with autism and learning disabilities	Website: autismplus.co.uk Phone: 0114 384 0284
Independent Travel Training	Helps young people learn to travel safely and independently	Website: sheffield.gov.uk/apply-independent-travel-training
Special Needs Inclusion Playcare Service (SNIPS)	Short breaks, activities and direct payments	Phone: 0114 273 5368 Email: SnipsBusinessSupport@sheffield.gov.uk
Citizens Advice	Advice about money, benefits and rights	Website: citizensadvice.org.uk
IPSEA	Legal advice about SEND and education	Website: ipsea.org.uk
Disability Rights UK	Information about disability rights and benefits	Website: disabilityrightsuk.org

Your Thoughts Matter

As you move forward, **remember, you don't have to figure everything out all at once.** Take small steps and focus on what feels right for you. If you ever feel unsure or need help, **talk to someone you trust**—like a teacher, parent, carer, or support service. **You are not alone, and there is always help if you need it.**

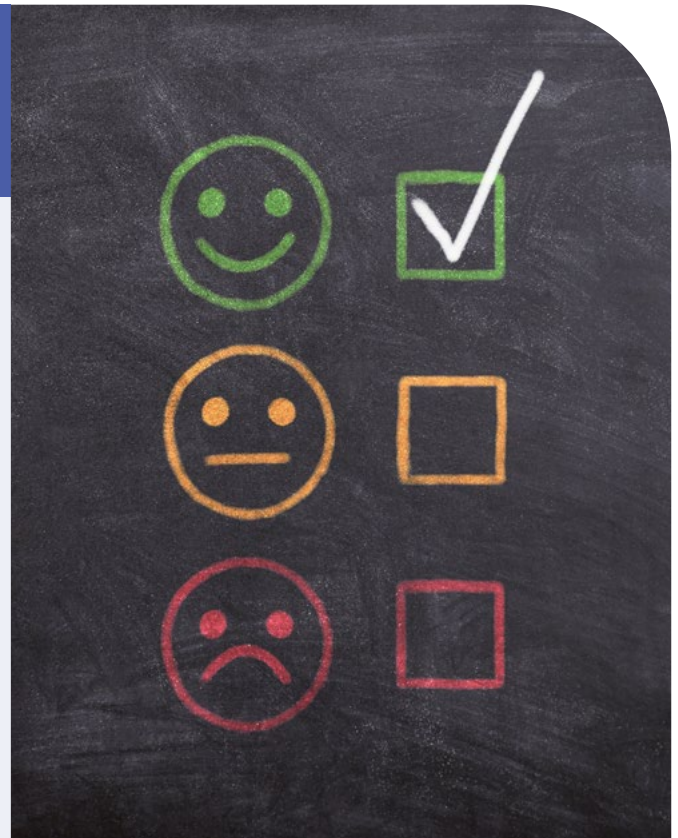
We would also love to hear what you think about this guide!

Visit the link below to share your thoughts:

forms.office.com/e/j3xnYHdxnq

You can tell us what you liked, what could be better, or any ideas you have. **Your feedback will help improve this guide for other young people.**

Thank you for sharing your thoughts.



Good luck with your journey—you've got this!



Published April 2026



**Lifelong
Learning
& Skills**

